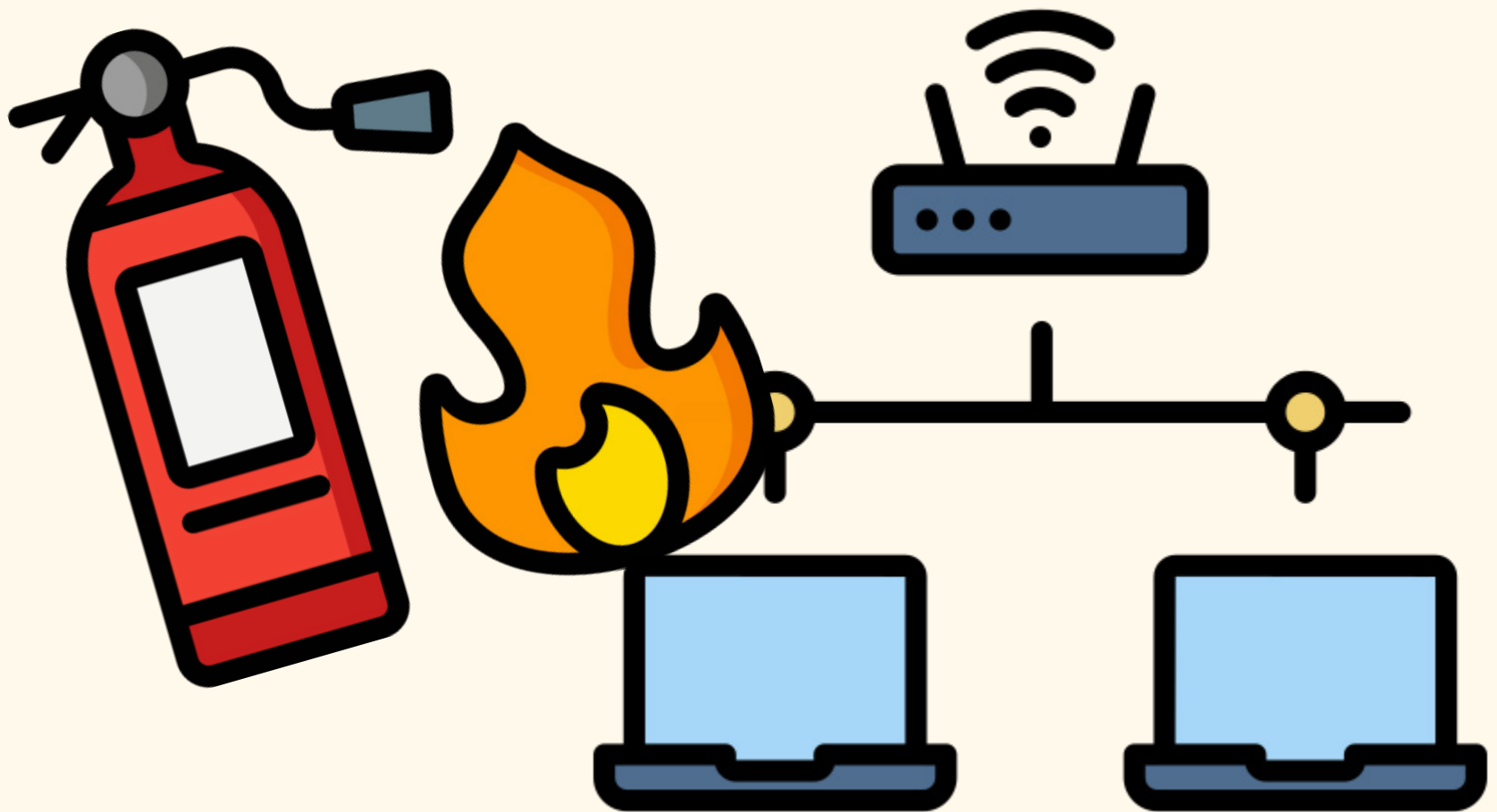


# Non-Wi-Fi Protocols That Will Destroy Your Wireless



# DNS



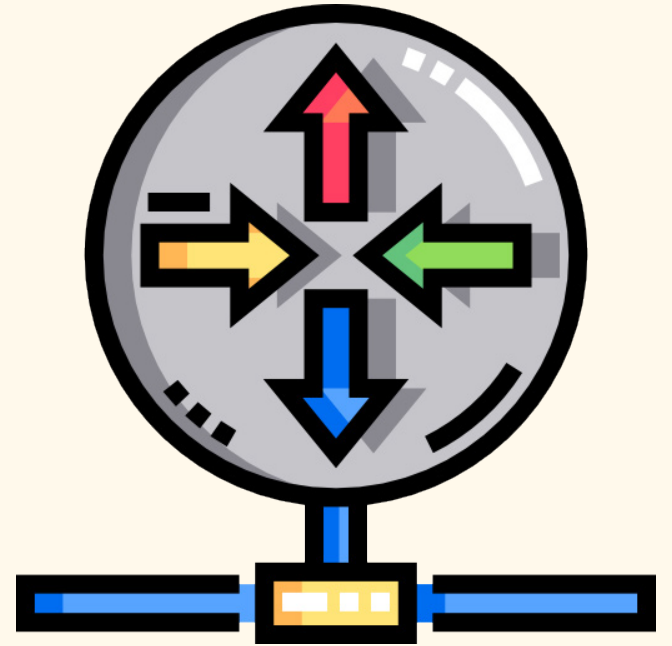
- Used in cloud management architectures for connectivity checks.  
(ex. Meraki)
- Also can be used for WLC discovery
- mDNS variant can strain performance  
(See Heavy Wireless Ep. 16/Bryan Ward's WLPC talk)

# TLS



- Used in 802.1x SSIDs for EAP-TLS, EAP-TTLS
- Used for secure WLC Web UI access
- Also used to encrypt cloud management architecture traffic
- Troubleshooting client-specific certificate issues is tedious

# VRRP



- Router redundancy misconfigurations can cause device connectivity issues
- Misconfigured redundancy subnets can cause unreliable client connections
- Unintended VRRP advertisements can cause unstable client/AP IP assignments

# Sources/Credits

-[https://documentation.meraki.com/Architecture\\_s\\_and\\_Best\\_Practices/Cisco\\_Meraki\\_Best\\_Practice\\_Design/Meraki\\_Cloud\\_Architecture](https://documentation.meraki.com/Architecture_s_and_Best_Practices/Cisco_Meraki_Best_Practice_Design/Meraki_Cloud_Architecture)

-<https://packetpushers.net/podcasts/heavy-wireless/hw016-how-mdns-can-kill-wi-fi-performance-and-what-to-do-about-it/>

-<https://www.cisco.com/c/en/us/td/docs/wireless/controller/8-1/olh/wlc-olh-81/wuic.html>

This post has been designed using resources from Flaticon.com (Artist: Smashicons, HANIS, Freepik)