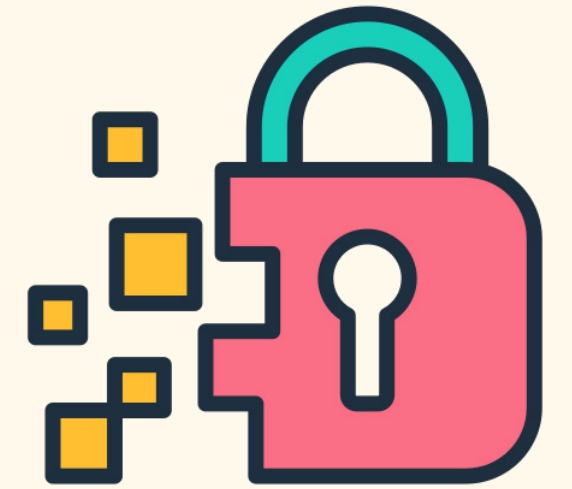


Key Takeaways From the WPA3 Specification

WPA3-Enterprise Transition

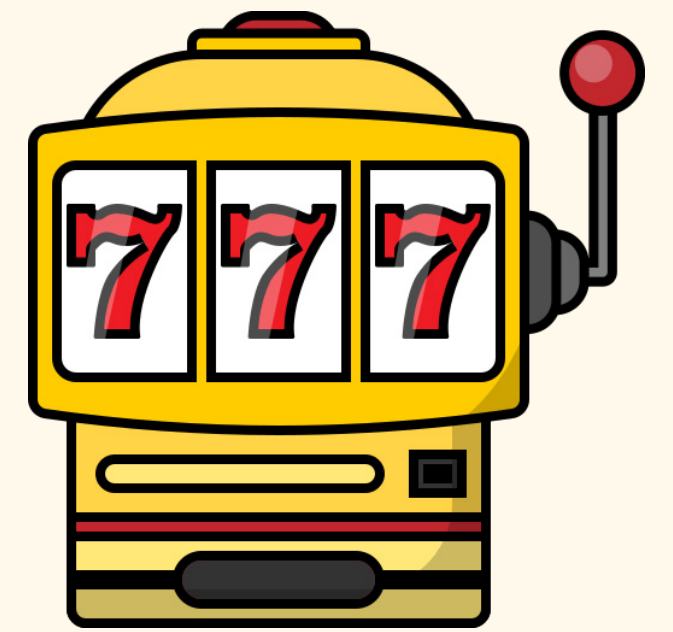
Section 3.3 This mode enables, but **does not require** MFP. However, completely disabling MFP is **not allowed**.



Wi-Fi 7 AKMs/Ciphers

Sections 2.5.5, 3.4.3, 11.3

The older 802.1x SHA (1) and PSK (2) AKMs are **not allowed**. STAs **must use GCMP-256** as pairwise cipher.



SAE-PK

Section 6 Extension to SAE intended for public networks. Requires additional public/private key pair.



Order of Operations

Section 4 Personal and Enterprise SSIDs have orders of what AKMs STAs should prefer. For example, personal SSIDs will prefer AKMs 24/25

